

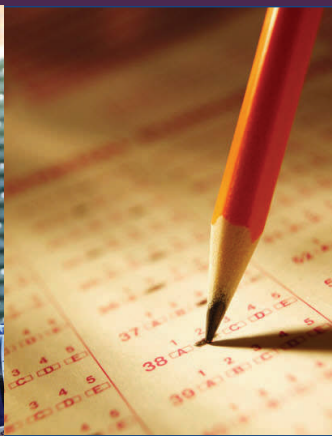
ROCKLIN UNIFIED SCHOOL DISTRICT



Creating ...

Pathways to Success

... for every student



2010 Report to the Community

Student Progress & Performance

This report was not prepared at taxpayer expense. It was made possible through generous contributions by the developers of Whitney Ranch and Communication Resources for Schools (Tom DeLapp).

Rocklin Unified School District

Quality Education to the Highest Standards!

A proven tradition of high academic achievement

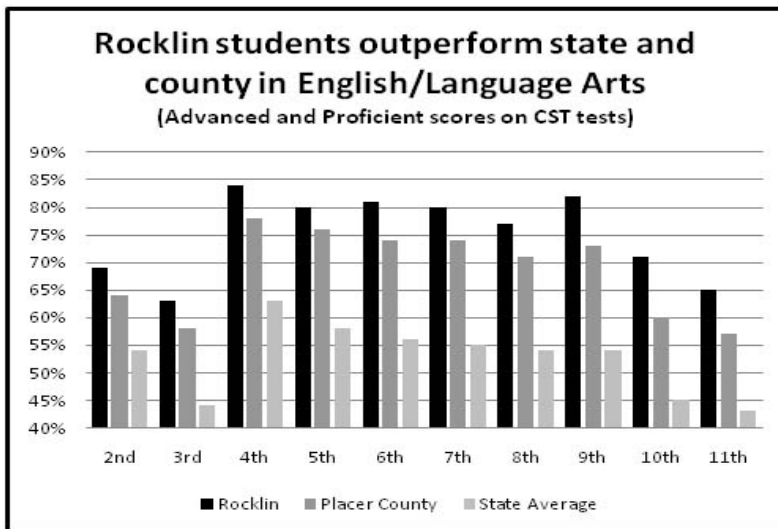
Rocklin USD is the only unified district in the Sacramento region with ALL schools scoring over 856 on the Academic Performance Index

School	2010 API
Antelope Creek	856
Breen	886
Cobblestone	865
Parker Whitney	887
Rock Creek	868
Rocklin Elementary	867
Ruhkala	896
Sierra	884
Twin Oaks	894
Valley View	934
Granite Oaks MS	906
Spring View MS	871
Rocklin High	865
Whitney High	862
District API	874

State goals require public schools to achieve the 800 API level by 2013. Rocklin Unified has already exceeded that goal. Rocklin's district-wide API score of 874 was 36 points higher than the Placer County average and 107 points higher than the California average.

- ▶ Students identified as Gifted & Talented perform exceptionally well in Rocklin. In 2009-10, the district estimated API for GATE students was a phenomenal 988 on a state scale of 1000.
- ▶ 195 teachers are receiving GATE certification to meet the needs of our 1,199 gifted students.
- ▶ Every teacher and instructional aide meets state standards as "highly qualified."
- ▶ RUSD English Language Learners have surpassed state achievement growth targets eight years in a row.

- ▶ RUSD is the **highest** scoring unified school district in the Placer/Sacramento region on the 2010 API. All schools exceed rigorous state accountability standards for students.
- ▶ Students in every grade level show consistent improvement and high achievement on the California Standards Tests.
- ▶ In 2009-10, Rocklin had the two highest achieving high schools in all of Placer County, and only four high schools ranked higher than RHS and WHS in all of Sacramento, El Dorado, Nevada, Placer, and Yolo counties.
- ▶ Granite Oaks was the highest performing middle school in Placer County. Spring View ranked seventh among the 17 middle schools in Placer County.
- ▶ Valley View is the highest performer among all traditional elementary schools in Placer County.
- ▶ 215 students scored a perfect 600 on at least one section of the California Standards Test. The number of perfect scores has steadily increased over the past four years.
- ▶ 74% of our 9th grade biology students scored proficient or advanced on the California Standards Test in 2009-10; the highest rate in Placer County.
- ▶ 59% of middle school students completed Algebra I ; 88% scored advanced or proficient on the California Standards Test by 8th grade. All RUSD students must pass both Algebra and Geometry in order to graduate from high school.
- ▶ 88% of our students are performing at high levels by scoring proficient or advanced in math.



In 2009-10, 63% to 84% of Rocklin students across all grade levels scored advanced or proficient in the English/Language Arts section of the California Standards Test. 84% of our fourth graders met this high standard last year. 79% of our middle school students were proficient or advanced.

Rocklin Unified School District

Quality Education to the Highest Standards!

Award-winning schools, outstanding students

California's rigorous accountability law required that 43.5% of students score at the proficient or advanced levels in 2009-10. RUSD students scored well above this rate.



Rocklin students excel in Math on 2010 CST

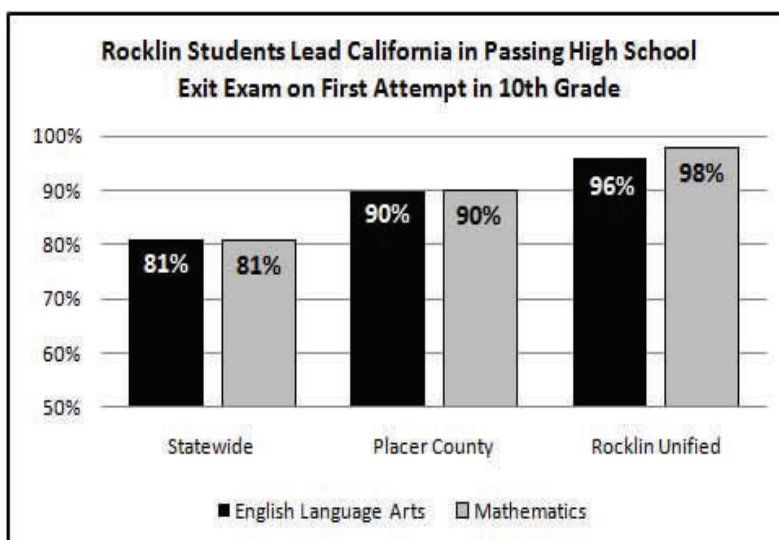
Grade Level	Number of Students Tested	Ranked Proficient or Advanced	State Average Proficient or Advanced	Percentage above state average
Grade 2	767	73%	62%	+ 11%
Grade 3	741	81%	65%	+ 16%
Grade 4	768	83%	68%	+ 15%
Grade 5	756	77%	60%	+ 17%
Grade 6	754	75%	52%	+ 23%
Grade 7	767	68%	49%	+ 19%

- ▶ Granite Oaks Middle School is recognized as a National Blue Ribbon school.
- ▶ Sierra Elementary School was authorized in 2010 as an International Baccalaureate (IB) World School, the only elementary school with that distinction in the Greater Sacramento area and one of only three in Northern California.
- ▶ Eleven Rocklin Unified schools have been recognized as California Distinguished Schools over the past ten years.
- ▶ Three RUSD leaders have been honored by the Association of California School Administrators in the past four years. Jim Trimble was named California Elementary Principal of the Year; Manny Rodriguez and Mary Anne Knox were named California Secondary Co-Administrators of the Year.
- ▶ From our 18 Advanced Placement courses, 750 students took one or more AP tests in 2009-10. 73% of our students earned a score of 3 or higher on the 1,284 AP tests taken, making them eligible to receive automatic college credit.
- ▶ On California's Physical Fitness Test in grades 5, 7 and 9, Rocklin students performed very well. 87% were in the healthy fitness zone on the six measures of strength, flexibility, and body composition.

- ▶ Rocklin's college-bound students scored well on the Scholastic Aptitude Test (SAT):

	CRITICAL READING	MATH	WRITING
Rocklin HS average	527	546	513
Whitney HS average	515	536	504
California average	500	513	498

- ▶ Rocklin students consistently outpace the statewide average on the ACT college acceptance exam.
- ▶ Nearly 172 students with unique learning needs receive specialized attention at the Rocklin Alternative Education Center (Victory High School and Rocklin Independent School).
- ▶ Many regular classroom teachers work in the evenings at two 45-day intervention sessions to assist students who are credit deficient and at risk of not passing the CAHSEE or graduating on time.
- ▶ Victory High School scored 666 on the Alternative Schools Accountability Model (ASAM), which is used for testing students in schools with highly mobile and at-risk students. VHS was one of the highest in our region for alternative educational programs. This was a significant six-year increase of 147 points.
- ▶ Students use technology at all grade levels in RUSD. Our "Smart Classrooms" have digital Internet access, LCD projectors, and multi-media learning tools. Campuses are equipped with technology labs, art rooms, and multi-purpose buildings with stages. RUSD averages one computer for every 4 students.



Last year, 97% of RUSD sophomores passed the CAHSEE on their first attempt. This was the highest pass rate in Placer County and among the highest statewide.

Students are well-prepared for college and careers

- ▶ The district offers a state-recognized model Visual and Performing Arts program at all elementary grade levels; instrumental music is offered in grades 5-12.
- ▶ Rigorous high school science classes range from physics, biology, and chemistry to physiology, marine biology, and geology. High school math classes include four levels of algebra, geometry, trigonometry, statistics, and Advanced Placement calculus.
- ▶ Both high schools offer a variety of electives including psychology, film, speech/debate, child development, photography, design and graphic communication, journalism, culinary arts, sociology, broadcasting, and the visual and performing arts.
- ▶ RUSD seniors were offered over \$9,500,000 in college scholarships and grants in 2010.
- ▶ New teachers receive extensive support and training including an induction/orientation program, Beginning Teacher Support and Assistance, and an assigned mentor.



Our high schools offer extensive career-focused education in Culinary Arts, Computer Aided Drafting, Construction Technology, Television Broadcasting, Computer Integrated Manufacturing, Electronics, Digital Photography, Engineering, and Science.

Over 90% of RUSD seniors enrolled in higher education after graduation. About 44% of our graduates go straight to four-year colleges. Roughly the same amount attend two-year community colleges as a cost-saving alternative. Many then move on to four-year universities. Rocklin Unified had a 96.1% high school graduation rate in 2009-10.



- ▶ Over 80% of Rocklin Unified's high school students participate in one or more extra-curricular activities including student clubs, athletics, student government, and the performing arts.
- ▶ By June 2010, Rocklin High School and Whitney High School seniors had logged over 75,000 hours of community service as part of RUSD's graduation requirements. Many students also have internships in area businesses.



Sunset Ranch Elementary School in the Whitney Ranch community opened in August 2010 with more than 500 students in grades K-6. The new school features state-of-the-art technology, a focus on STEM (Science, Technology, Engineering & Math) and the Arts. Students have access to a fully-equipped Science Lab to support campus-wide instruction.



The Whitney High School Air Force Jr. ROTC Cadet Drill Team, has won – for two consecutive years – the NORCAL Overall Sweepstakes 1st Place Drill Meet.

ROCKLIN UNIFIED SCHOOL DISTRICT 2010 Report to the Community Student Progress & Performance

Kevin Brown, Superintendent of Schools

2615 Sierra Meadows Drive Rocklin, California 95677 (916) 624-2428 www.rocklin.k12.ca.us